

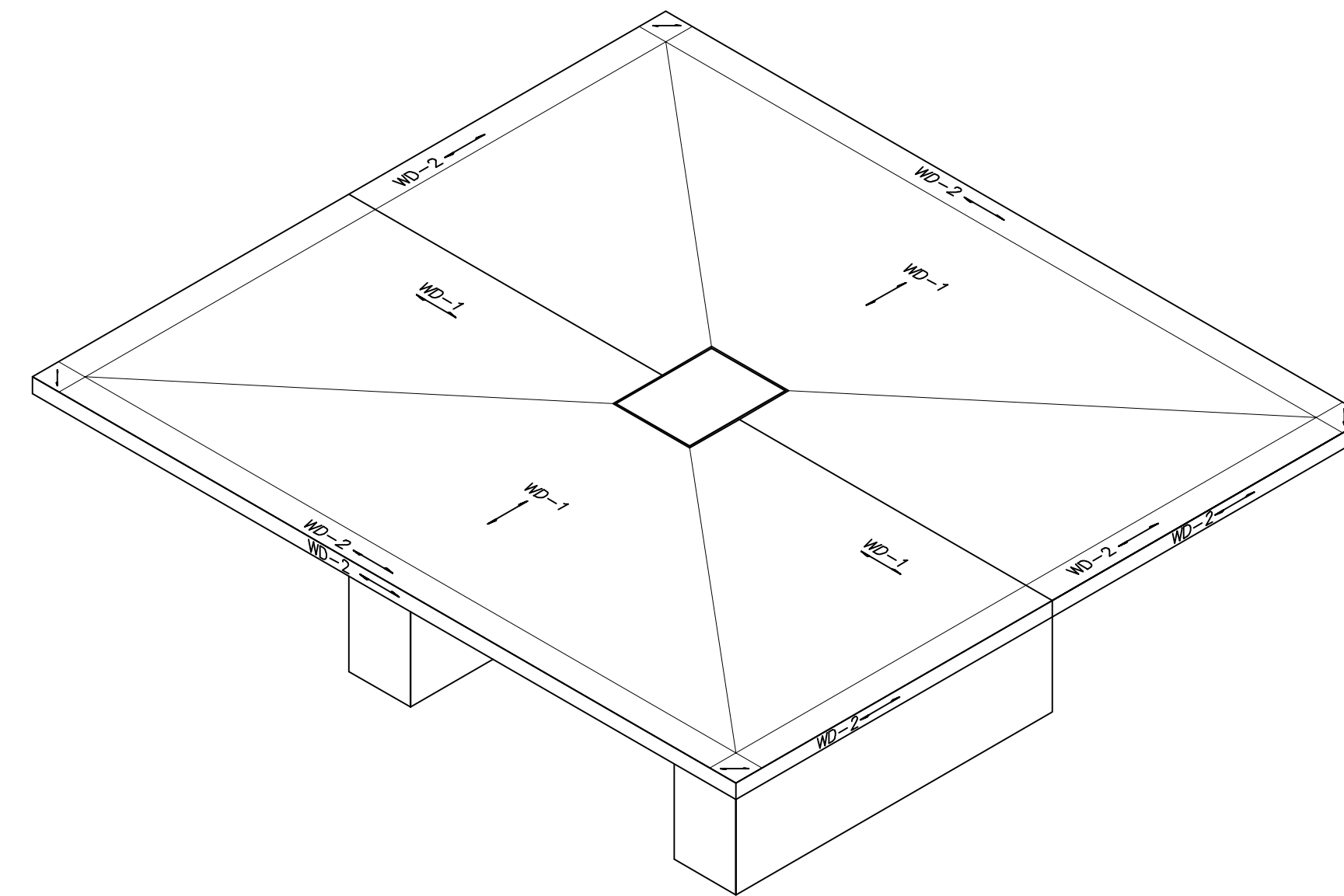
A PLAN VIEW OF TABLE
 5-1.1 SCALE: 1" = 1'-0"
 ARCH. REF: SK-3

TABLE TOP PART NUMBERS

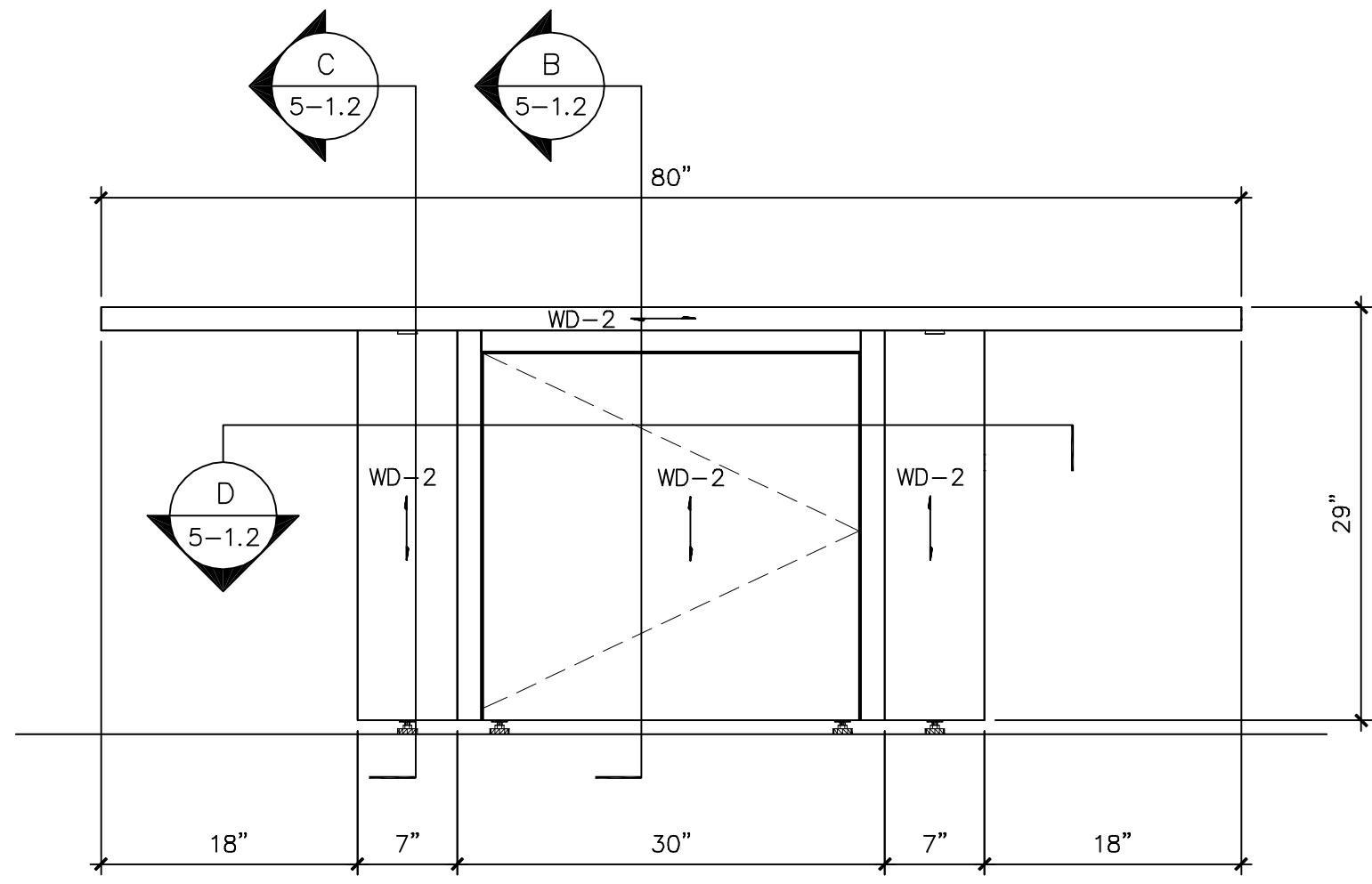
1323	1323 AA	1323 SG	DF-001A	DF-002A	DF-003A
			DF-001B	DF-002B	DF-003B
1327	1327 AA	1327 SG	DF-004A	DF-005A	DF-006A
			DF-004B	DF-005B	DF-006B
1334	1334 AA	1334 SG	DF-007A	DF-008A	DF-009A
			DF-007B	DF-008B	DF-009B

TABLE BASE PART NUMBERS

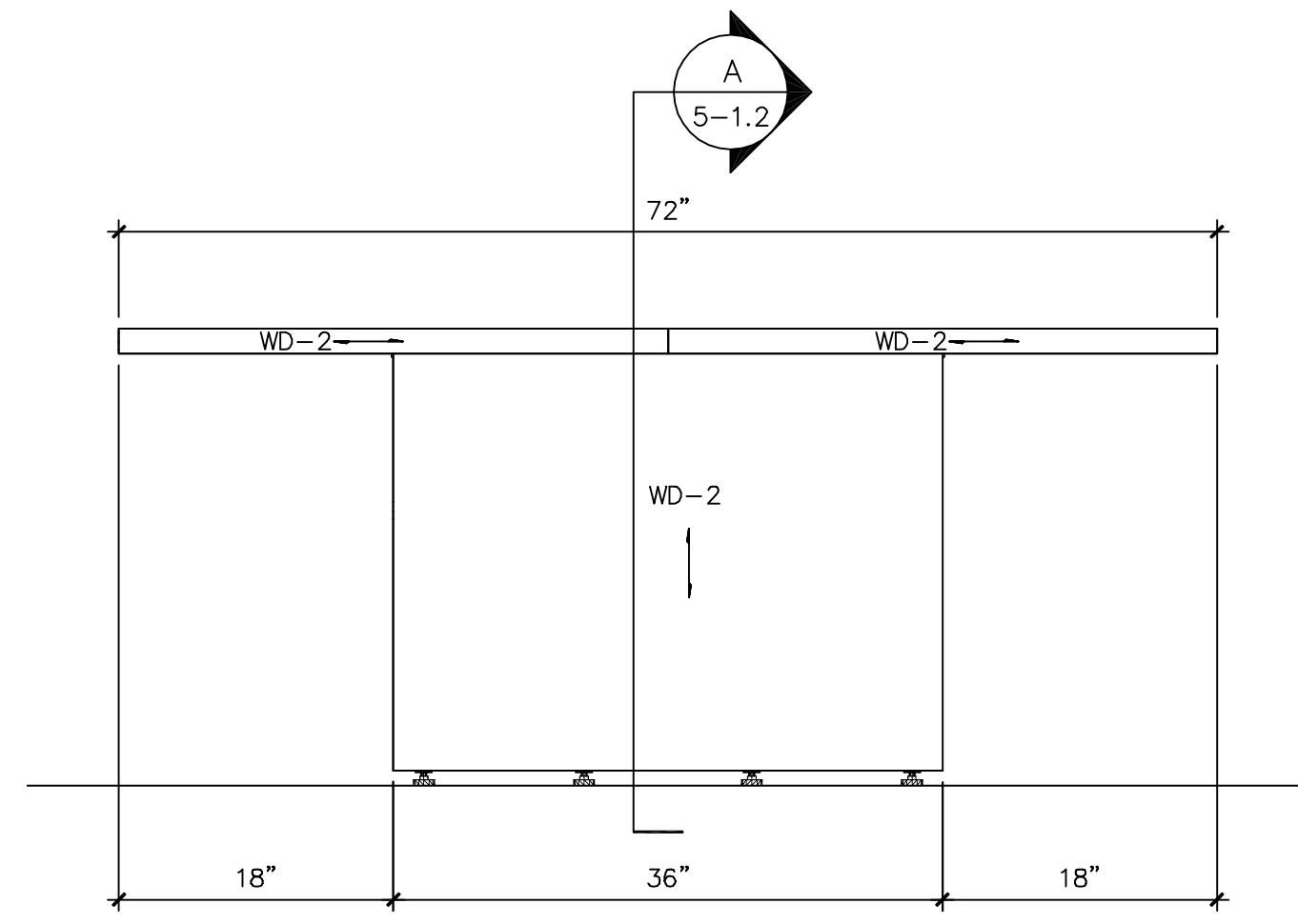
1342	1342 AA	1342 AB	DF-A1	THRU	DF-A20
			DF-B1	THRU	DF-B20
	1342 SG	1342 SH	DF-C1	THRU	DF-C20
1350	1350 AA	1350 AB	DF-A1	THRU	DF-A20
			DF-B1	THRU	DF-B20
	1350 SG	1350 SH	DF-C1	THRU	DF-C20
1351	1351 AA	1351 AB	DF-A1	THRU	DF-A20
			DF-B1	THRU	DF-B20
	1351 SG	1351 SH	DF-C1	THRU	DF-C20



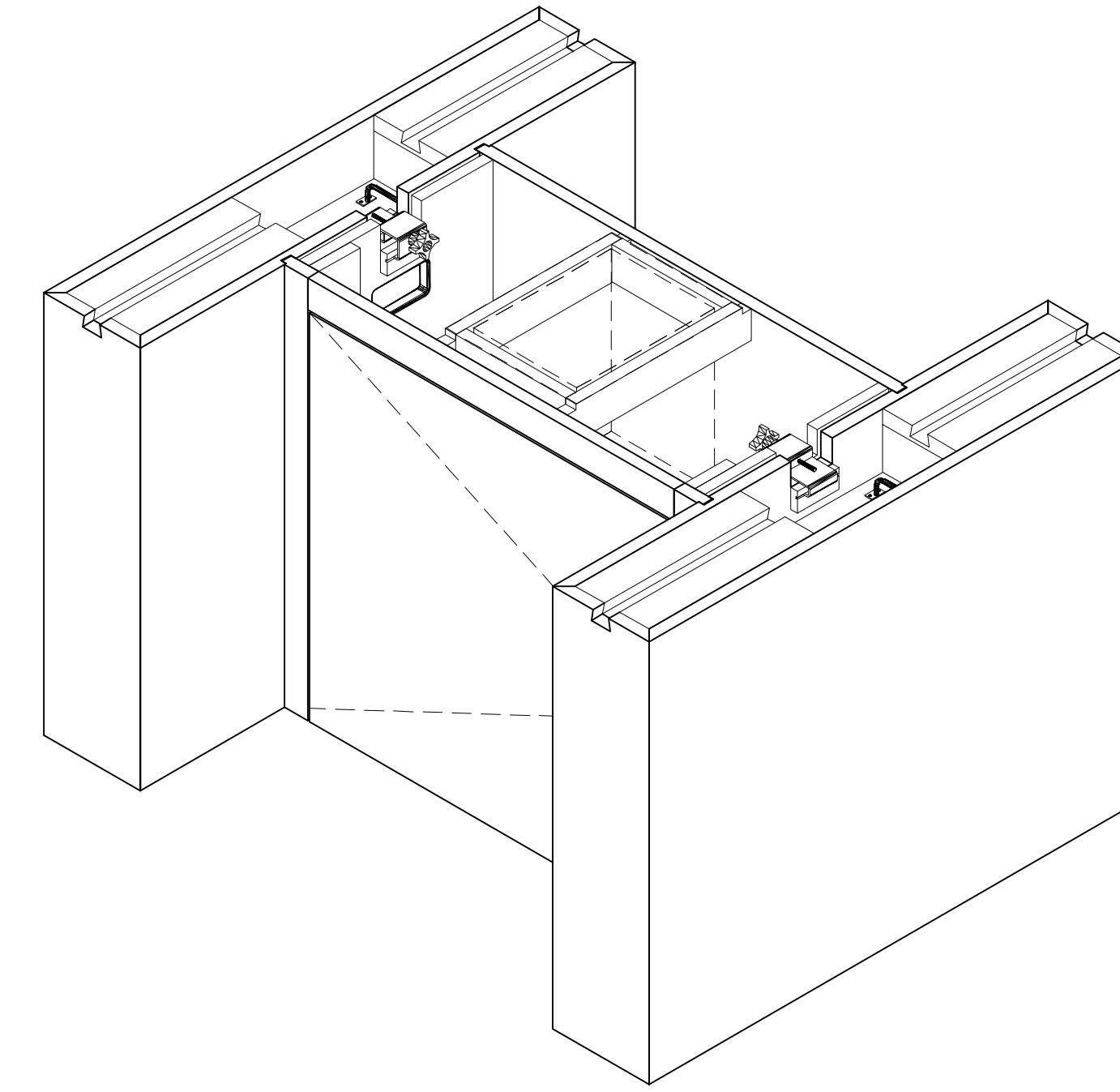
D ISOMETRIC VIEW
 5-1.1 SCALE: 1" = 1'-0"
 ARCH. REF: SK-3



B ELEVATION
 5-1.1 SCALE: 1" = 1'-0"
 ARCH. REF: SK-3



C ELEVATION
 5-1.1 SCALE: 1" = 1'-0"
 ARCH. REF: SK-3



E ISOMETRIC VIEW OF BASE
 5-1.1 SCALE: 1" = 1'-0"
 ARCH. REF: SK-3

NOTES:

FINISHES:

WD-1: BLOCK MOTTLE MAKORE
 WD-2: QUARTER SLICED MAKORE

CABINET HARDWARE:

HINGES: BLUM 125' CONCEALED FREE SWING
 CATCH: HAFELE #245.61.126 TOUCH LATCH
 PULLS : STANLEY #SP482, BRIGHT ZINC
 LEVELERS: SELBY #G-450-5/16x2
 GANGING CLAMPS: DOUG MOCKETT #GC1
 TABLE CATCH: HAFELE #642.39.827
 PEG AND SLEEVE CONNECTOR:
 HAFELE #642.51.243
 POP-UP UNIT: FSR PTB-3, POP-UP TABLE
 BOXES, 3 GANG OPENING, AC CONNECTION
 ON EACH SIDE AND BLACK COVER.

DOUBLE CHECK BY: _____ DATE: _____

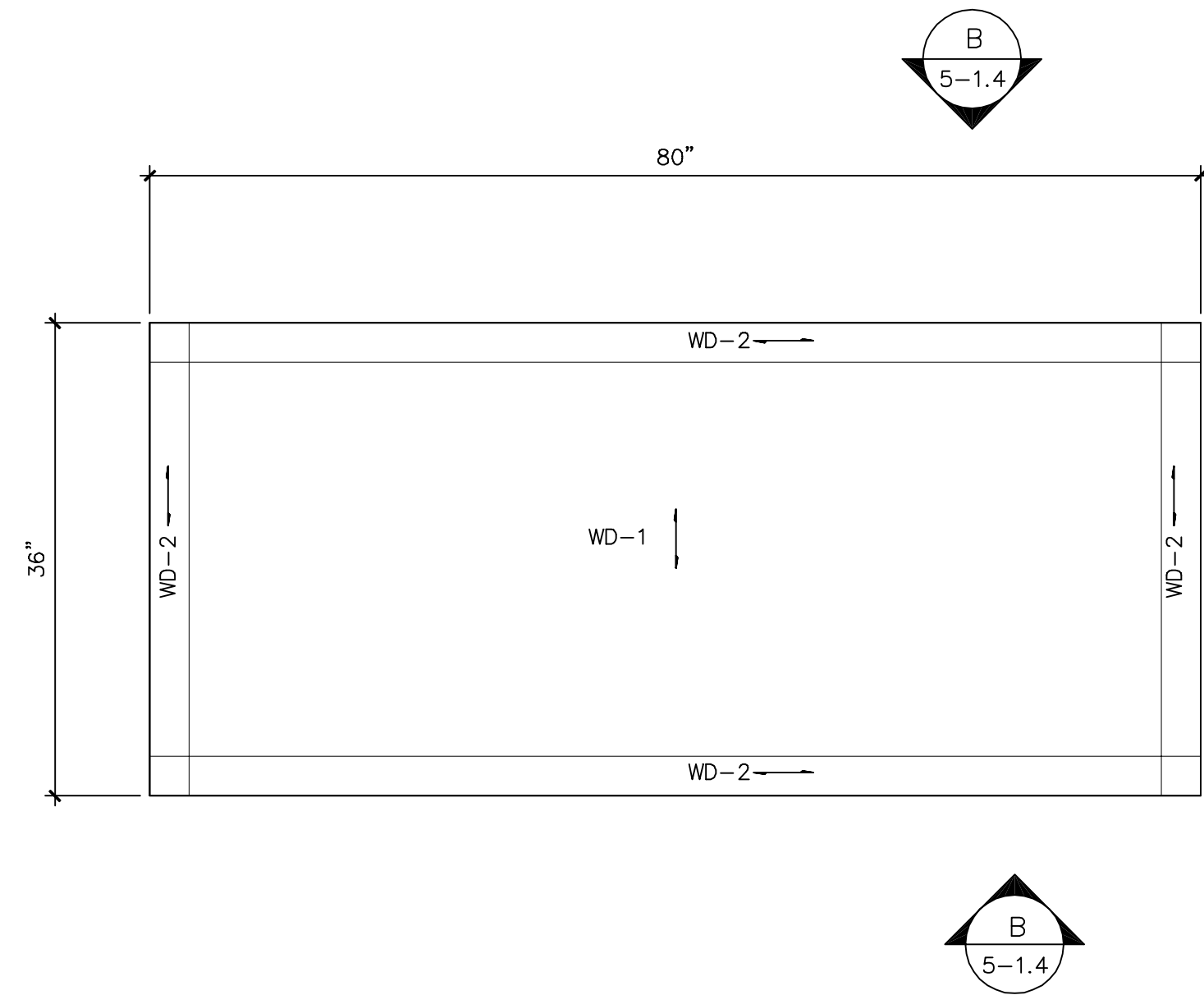
FIELD LAYOUT BY: _____ DATE: _____

7.
6.
5.
4.
3.
2.
1.
REVISIONS:

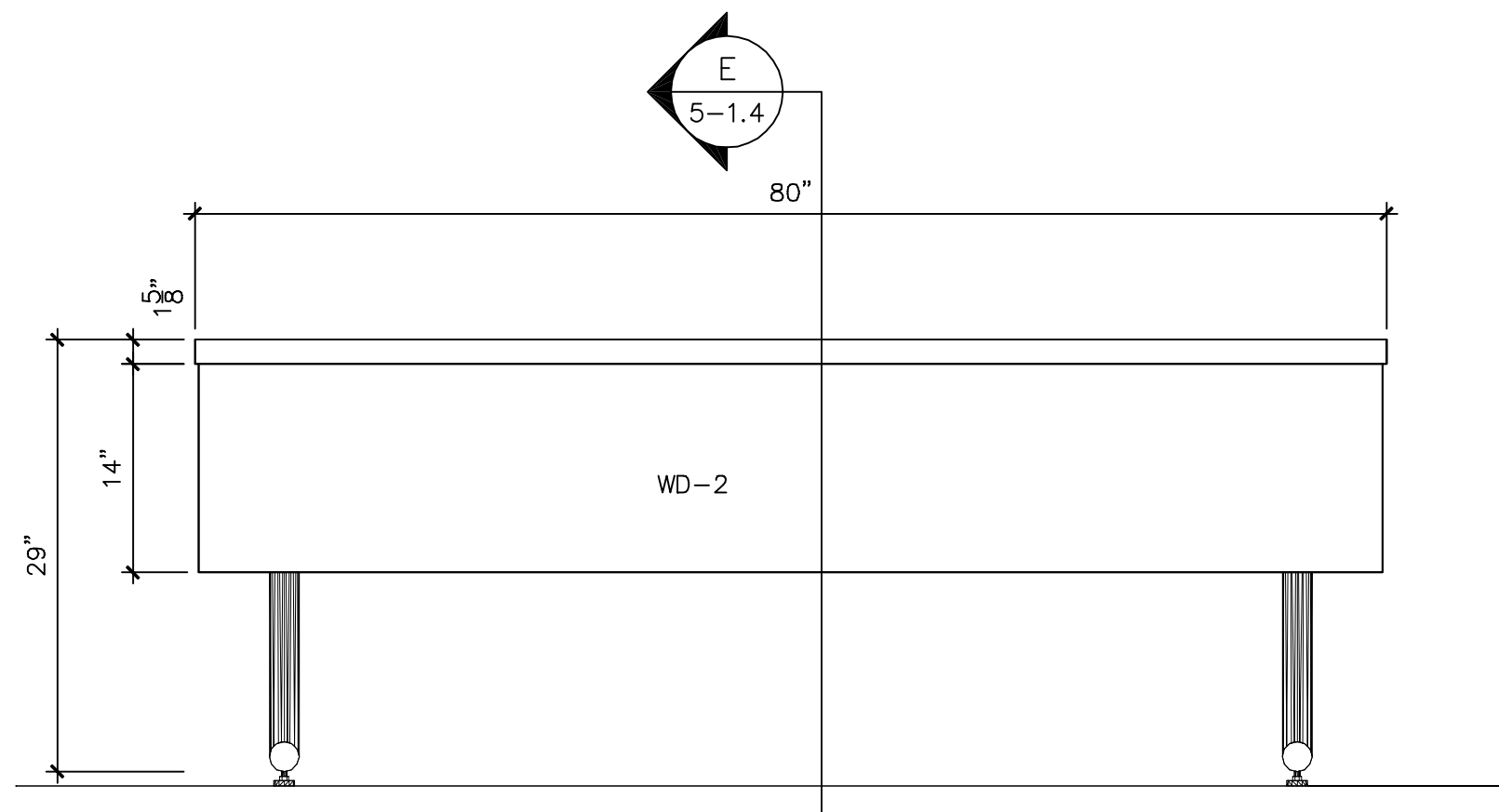
JOB NAME:
 COPORATE OFFICE
 HOUSTON, TEXAS

DRAWING NAME:
 LARGE TABLE SECTION
 (9) UNITS REQUIRED

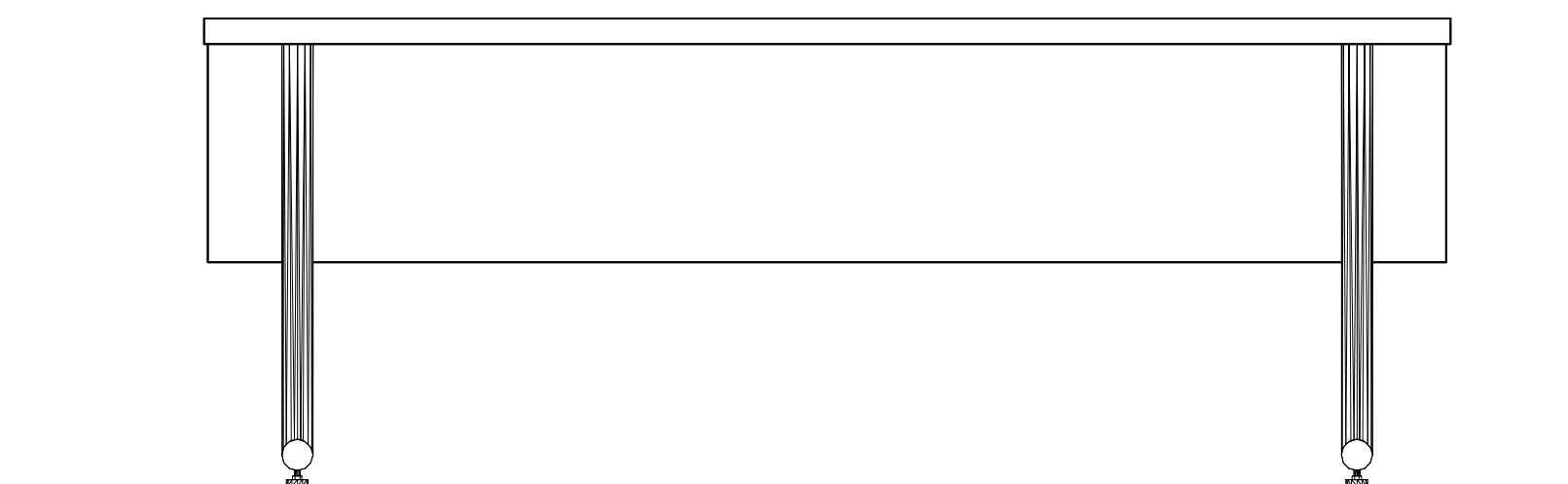
DRAWN BY:	DRAWING DATE: 8/9/02
JOB NO.	DRAWING NO. 5-1.1



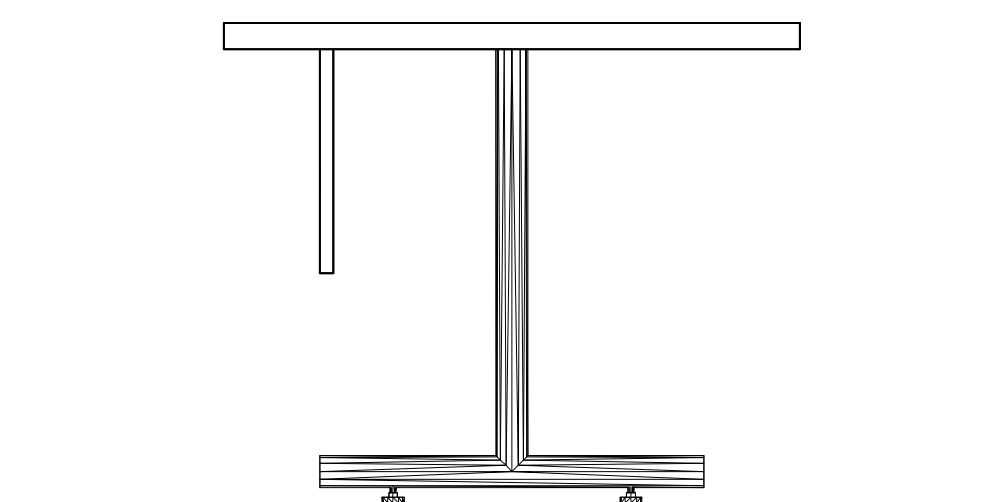
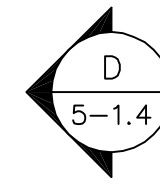
A PLAN VIEW OF TABLE
 5-1.4 SCALE: 1" = 1'- 0"
 ARCH. REF: SK-5



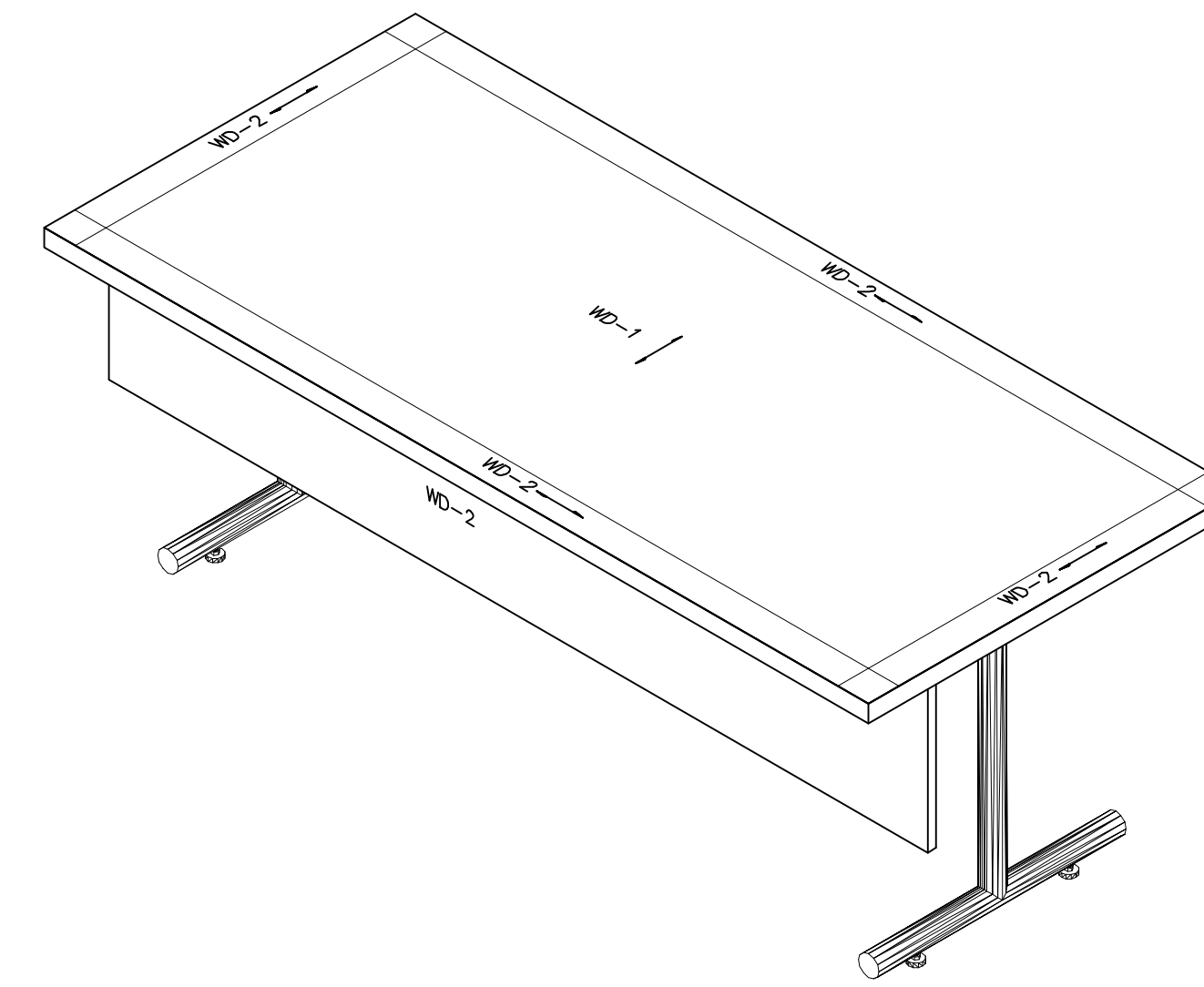
B ELEVATION
 5-1.4 SCALE: 1" = 1'- 0"
 ARCH. REF: SK-5



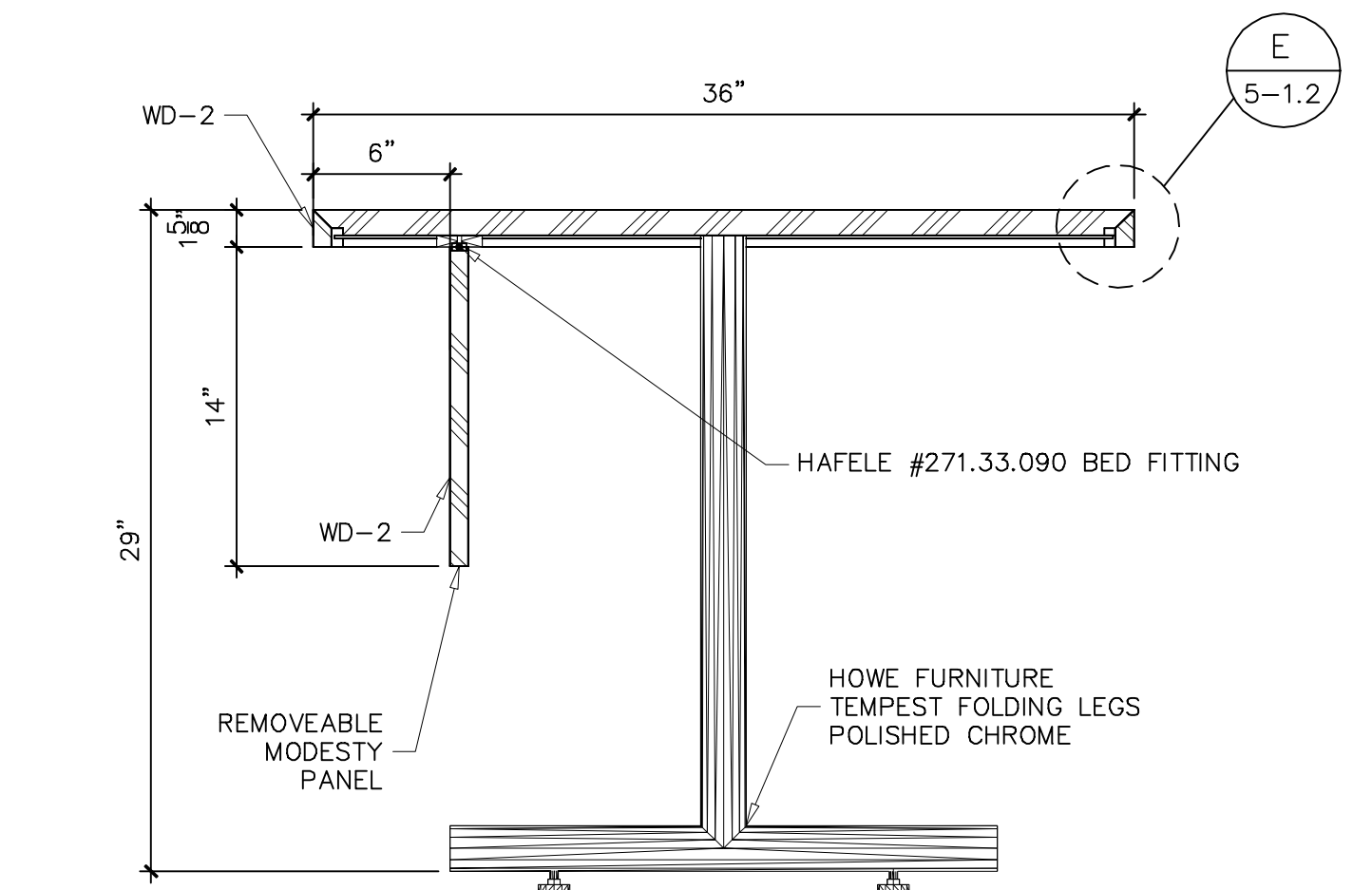
C ELEVATION
 5-1.4 SCALE: 1" = 1'- 0"
 ARCH. REF: SK-5



D ELEVATION
 5-1.1 SCALE: 1" = 1'- 0"
 ARCH. REF: SK-3



F ISOMETRIC VIEW
 5-1.4 SCALE: 1" = 1'- 0"
 ARCH. REF: SK-5



E VERTICAL SECTION
 5-1.4 SCALE: 1-1/2" = 1'- 0"
 ARCH. REF:

NOTES:

FINISHES:
 WD-1: BLOCK MOTTLE MAKORE
 WD-2: QUARTER SLICED MAKORE

CABINET HARDWARE:

BED FITTINGS: HAFELE #271.33.090

1352
 RUN 1 (4 OF 8) TABLES

1379
 RUN 2 (4 OF 8) TABLES

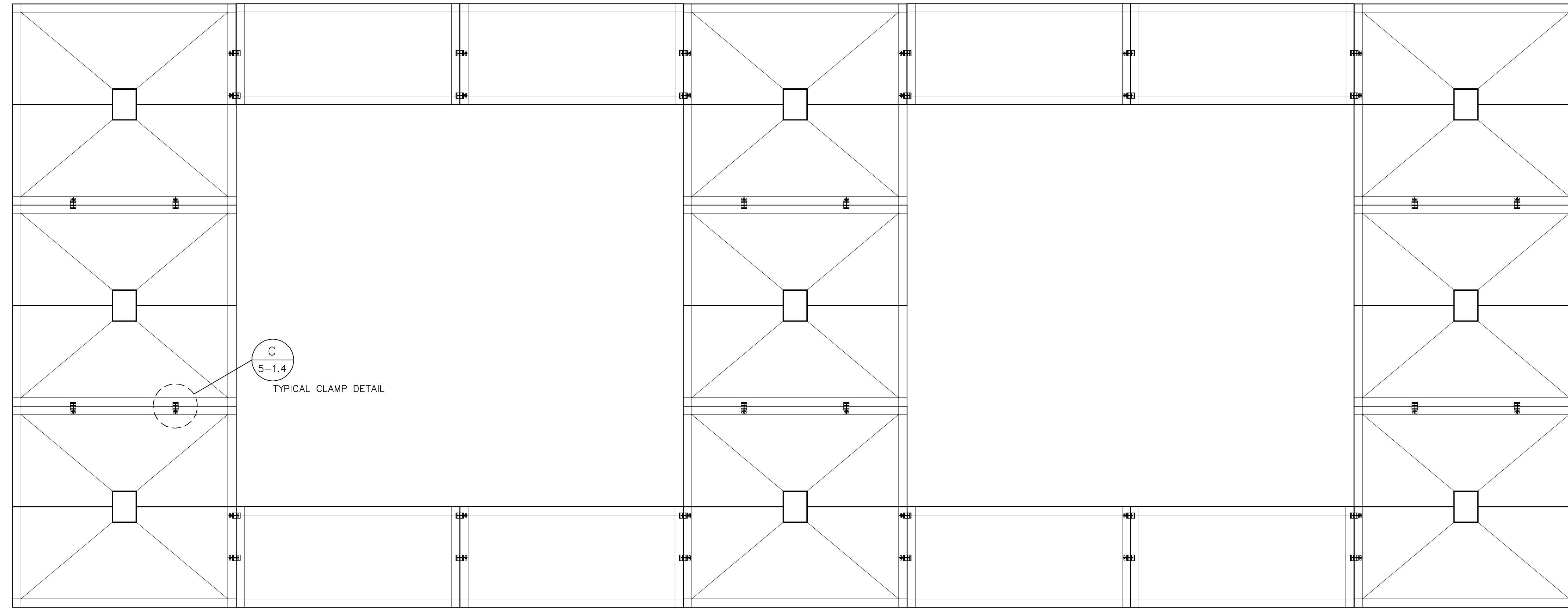
DOUBLE CHECK BY:	DATE:
FIELD LAYOUT BY:	DATE:

7.	
6.	
5.	
4.	
3.	
2.	
1.	CHANGE SKIRT HEIGHT WP 10/10/02
REVISIONS:	

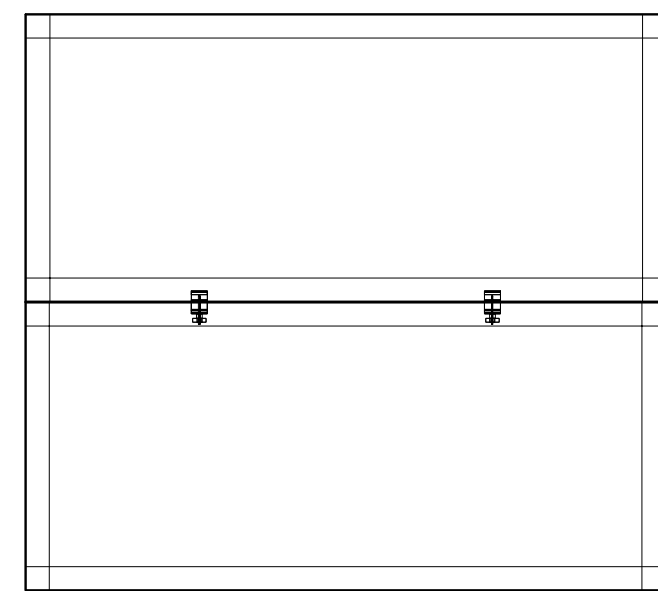
JOB NAME:
 COPORATE OFFICE
 HOUSTON, TEXAS

DRAWING NAME:
 SMALL TABLE SECTION
 (8) UNITS REQUIRED

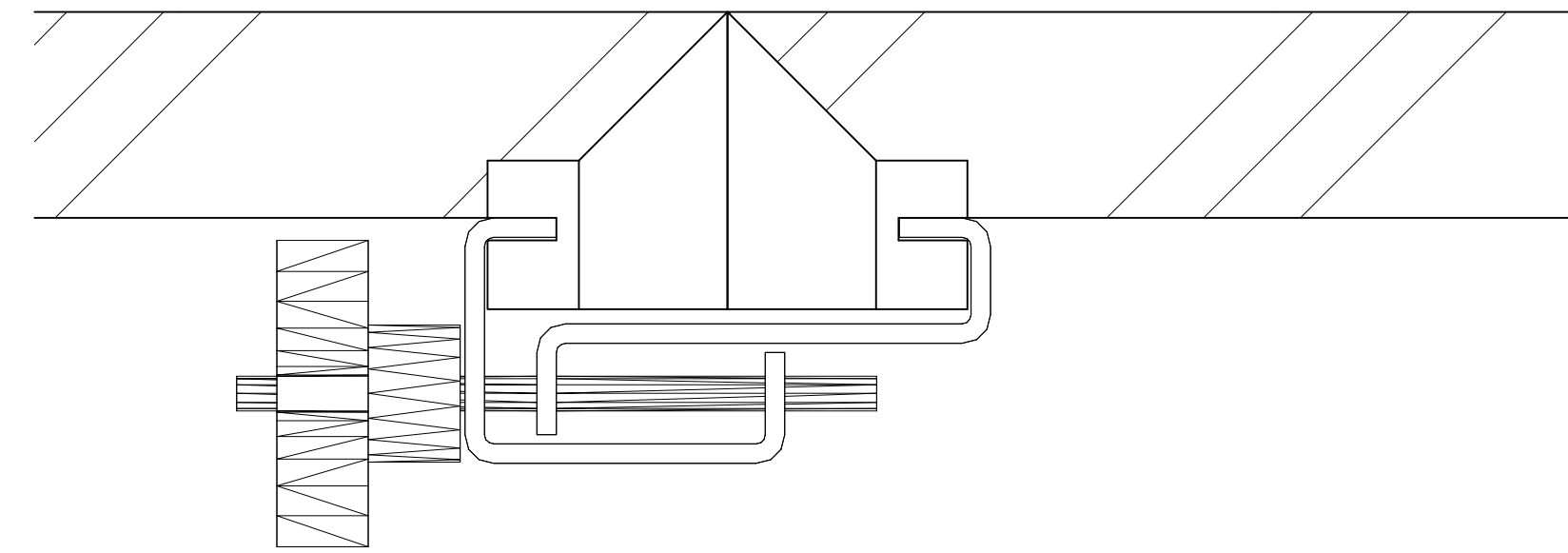
DRAWN BY:	DRAWING DATE: 8/11/02
JOB NO.	DRAWING NO. 5-1.4



A PLAN VIEW OF GANGED TABLES
 5-1.5 SCALE: 1/2" = 1'- 0"
 ARCH. REF: SK-4



B PLAN VIEW OF GANGED FOLDING TABLES
 5-1.5 SCALE: 1/2" = 1'- 0"
 ARCH. REF:



C DETAIL OF GANGING CLAMP
 5-1.5 SCALE: FULL
 ARCH. REF:

--

NOTES:

--	--

DOUBLE CHECK BY:	DATE:

FIELD LAYOUT BY:	DATE:

7.	
6.	
5.	
4.	
3.	
2.	
1.	
REVISIONS:	

JOB NAME:
 COPORATE OFFICE
 HOUSTON, TEXAS

DRAWING NAME:
 PLAN OF GANGED
 TABLES

DRAWN BY:	DRAWING DATE: 8/11/02
JOB NO.	DRAWING NO. 5-1.5