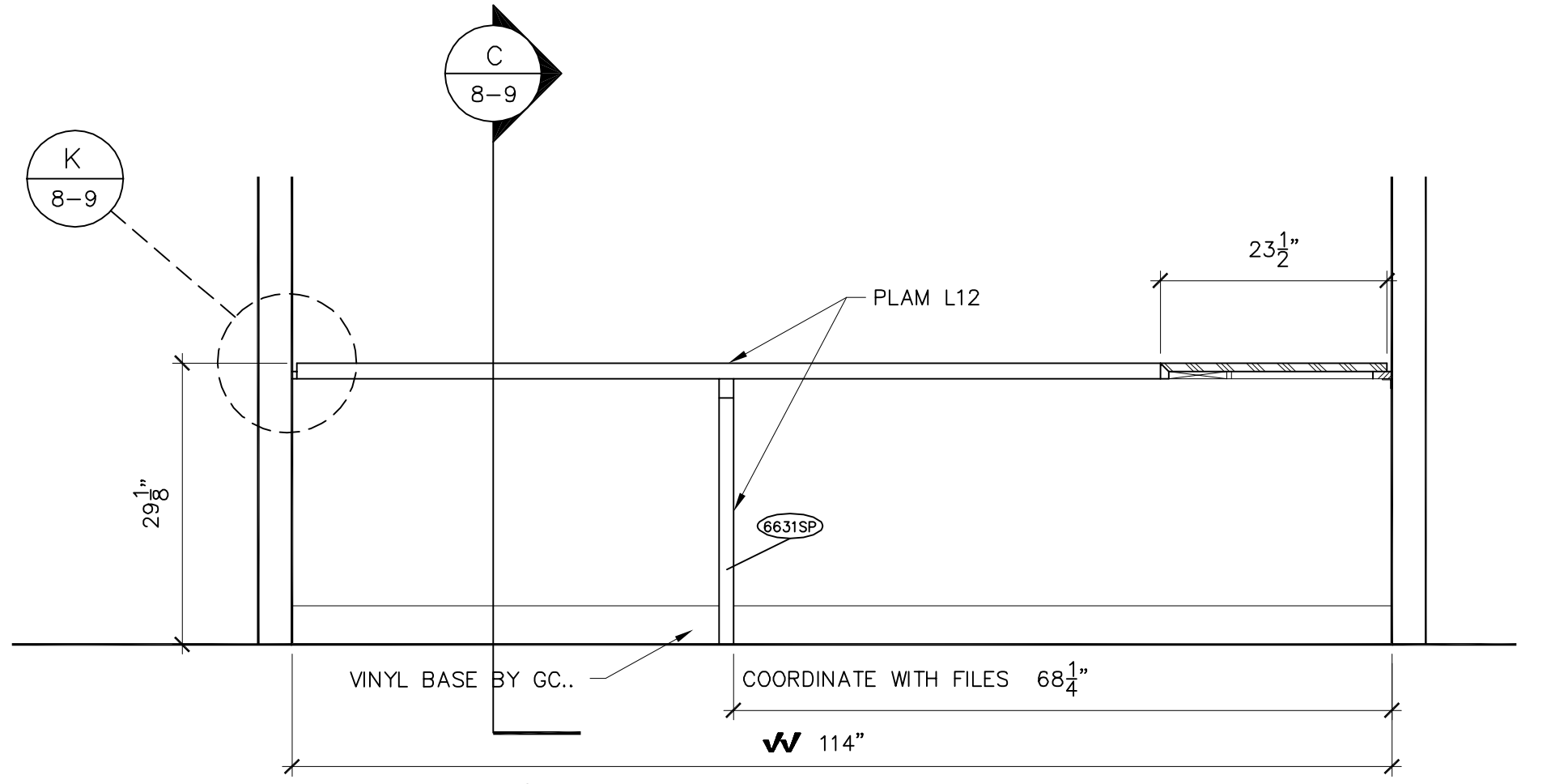
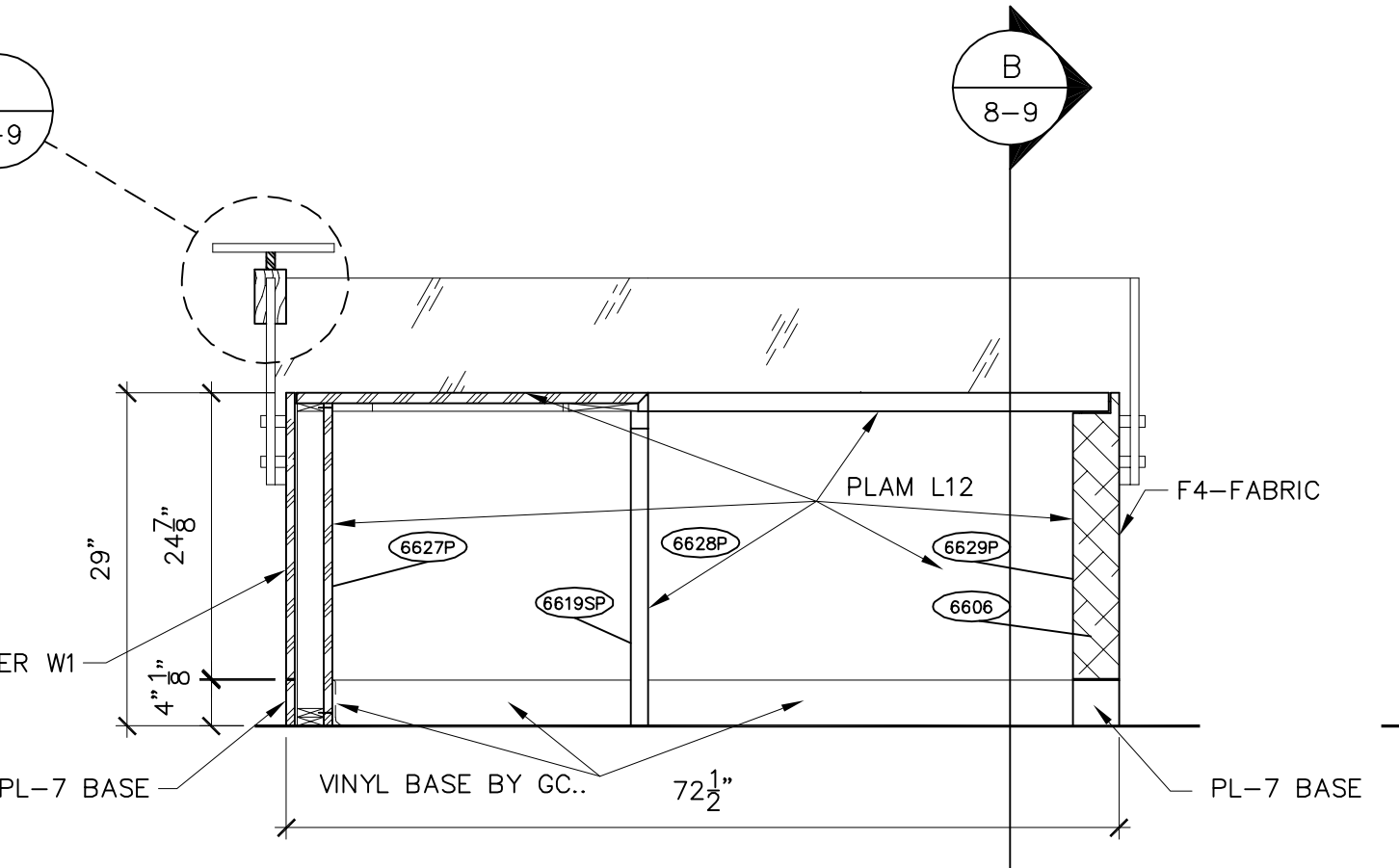


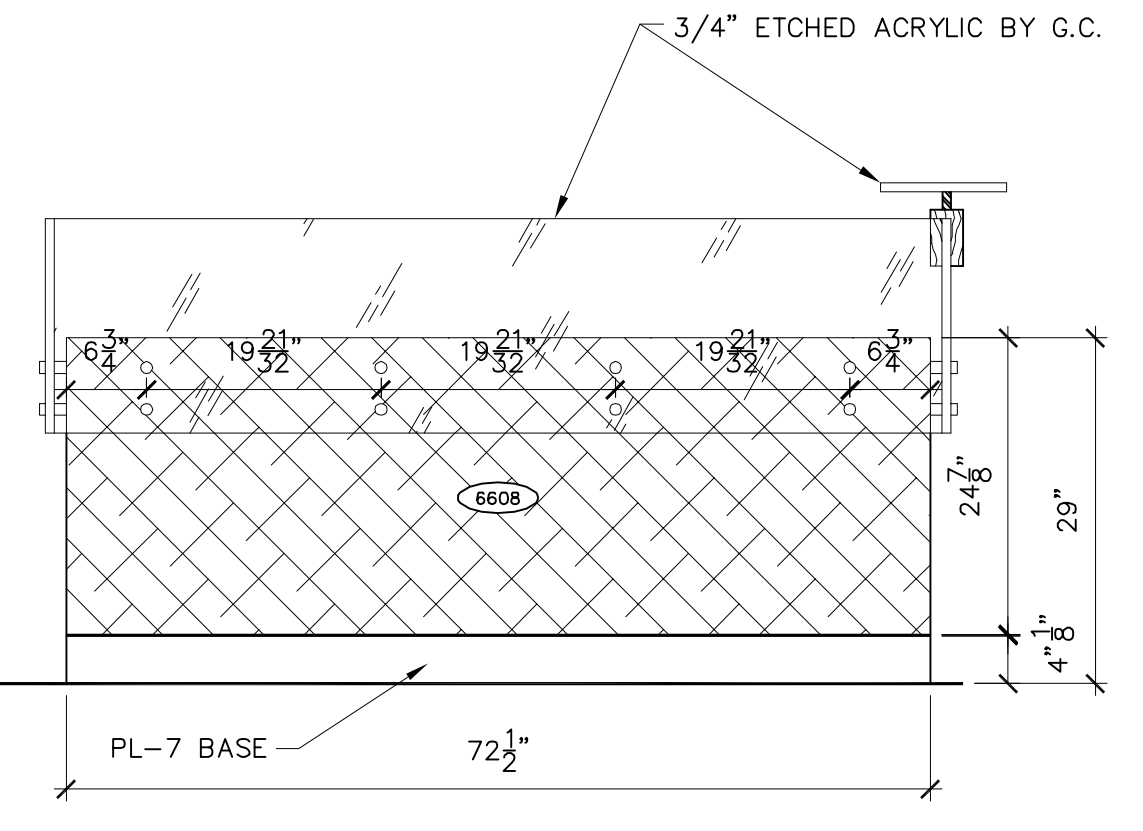
G REAR ELEVATION
 8-7 SCALE: 3/4"=1'
 ARCH. REF:



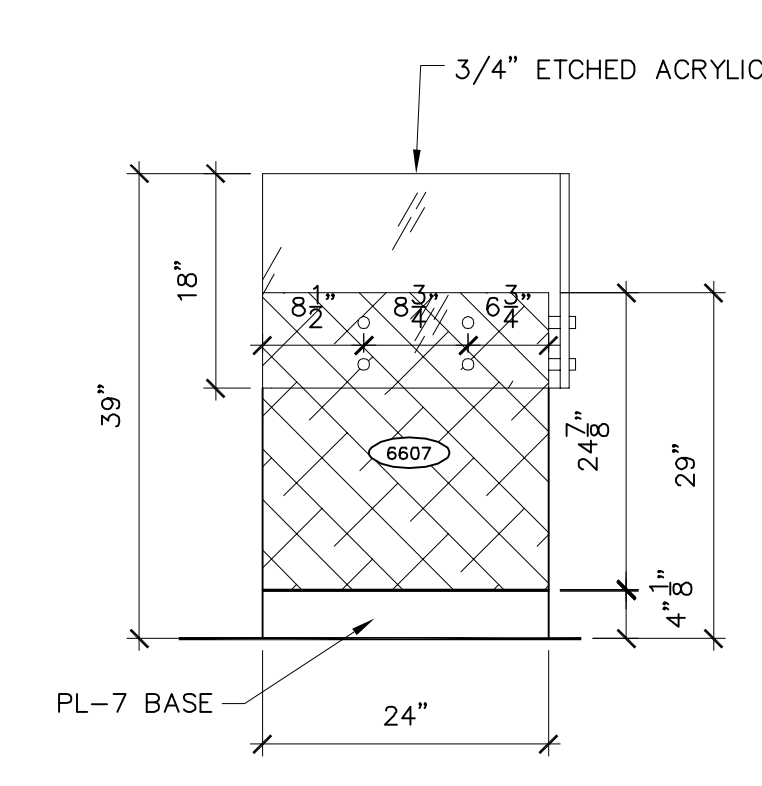
F BACK WALL ELEVATION
 8-7 SCALE: 3/4"=1'
 ARCH. REF:



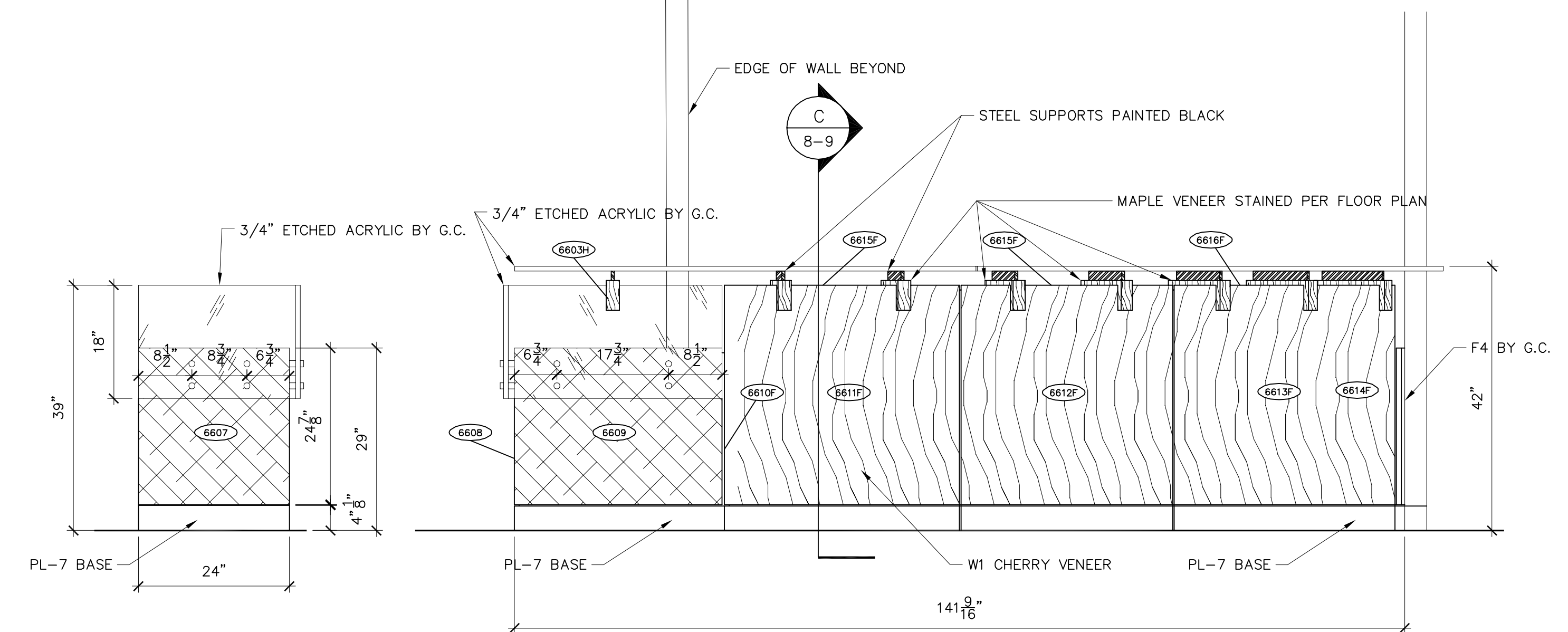
E INSIDE ELEV./SECT.
 8-7 SCALE: 3/4"=1'
 ARCH. REF:



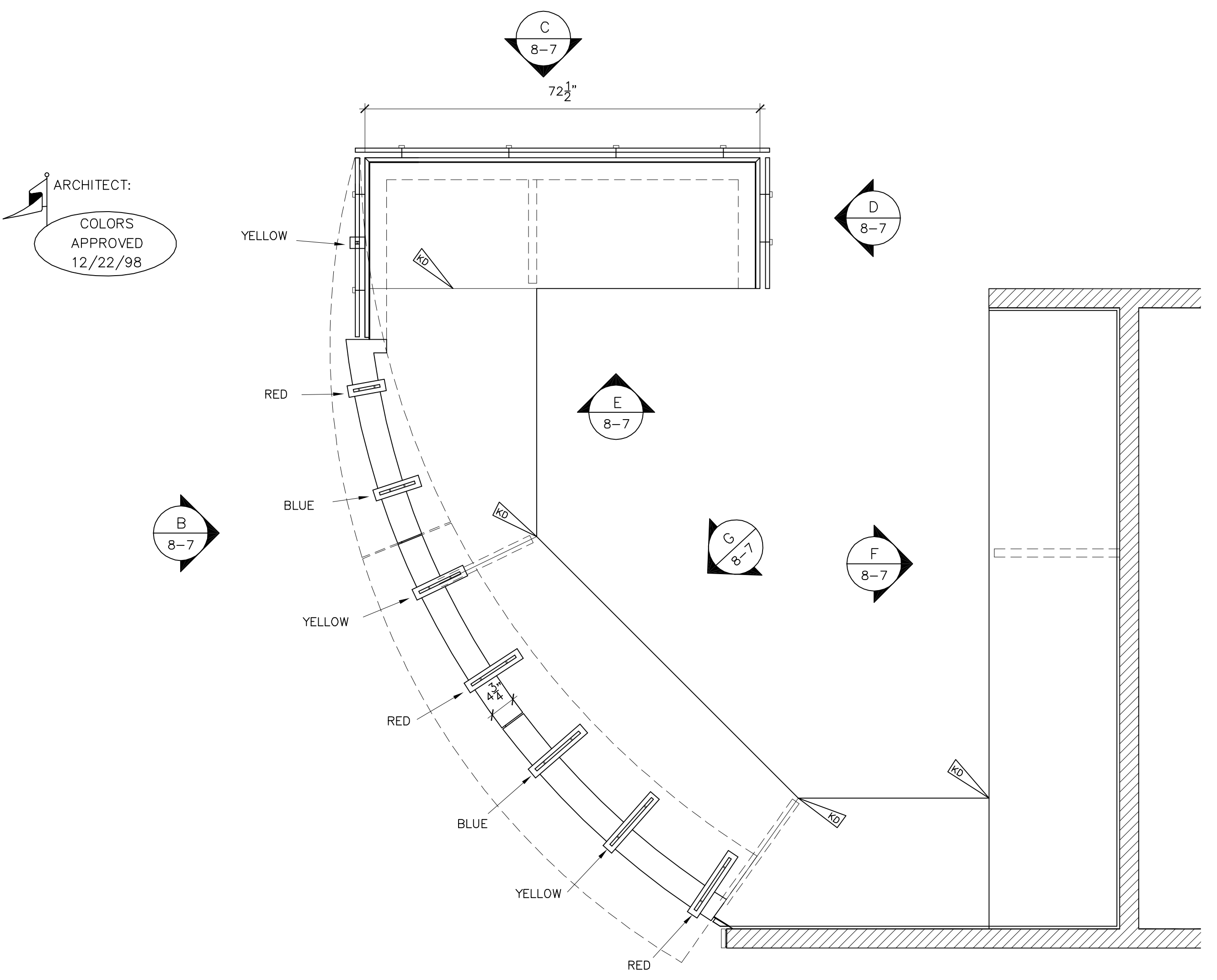
C SIDE ELEVATION
 8-7 SCALE: 3/4"=1'
 ARCH. REF: 10/A10.11b



D END ELEVATION
 8-7 SCALE: 3/4"=1'
 ARCH. REF:



B FRONT ELEVATION
 8-7 SCALE: 3/4"=1'
 ARCH. REF: 11/A10.11b



A PLAN VIEW
 8-7 SCALE: 3/4" = 1'- 0"
 ARCH. REF: 11/A10.11c

ARCHITECT:
 COLORS APPROVED
 12/22/98

- NOTES:**
- W1 CHERRY VENEER
 W4, W5, W6 COLORED MAPLE VENEER
 - L12 INTERLAM MAGNATITE #2205
 - STEEL SUPPORTS - 1/2" STEEL PLATE
 1/4" CHANNEL
 - 1" DIA. STAINLESS STEEL PUCKS & SPACERS
 B & N INDUSTRIES
 - THREADED ROD AND INSERTS
 - SUPPLIED AND INSTALLED BY G.C.
 FC-12 FABRIC
 F4 FABRIC
 3/4" ACRYLIC

3942	AA	820
	BA	820
	BB	820
	BC	820
	BD	820
	BE	820
	CA	820
	CB	820
	CC	820
	CD	820
	DA	820
	DB	820
	DC	820
	DD	820
	DE	820

- 4244 3942 A 3-PLY VENEER SG.
- 4255 820 MA METAL BRACKETS
- 4245 400 LG TEMPLATES @ RADIUS ACRYLIC TOPS

DOUBLE CHECK BY:	DATE:
FIELD LAYOUT BY:	DATE:
7.	
6.	
5.	
4.	
3.	
2.	
1.	
REVISIONS:	

JOB NAME:
 COPORATE OFFICE
 RESTON, VA.

DRAWING NAME:
 ELEVATIONS AT
 RECEPTION 661

DRAWN BY:	DRAWING DATE: 12/11/98
JOB NO.	DRAWING NO. 8-7

